

Innovating Excellence in Water Solutions



Established in 2010, ORG Engitech Limited is an Ahmedabad-based innovator in water purification and treatment. With a focus on cutting-edge technology and sustainable practices, we deliver practical, high-quality solutions for clean & pure water.

- **Core Focus :** Providing cost-effective water treatment solutions for a sustainable future.
- **Mission :** Delivering innovative, practical, and high-quality water treatment solutions.
- **Vision :** “To be a Pioneer in providing clean, pure, and cost-effective water solutions to every home.”
- **Values :** Innovation, Integrity, Customer Focus.

Products, Manufacturing Facilities, Quality and R & D : We combine in-house manufacturing with stringent quality control to ensure the highest standards. Our commitment to sustainability drives us to develop eco-friendly products and processes.

- **In-House Manufacturing :** Residential & Industrial Water Purification Systems, Softeners, Pressure Pumps, and high quality, cost-effective components for water treatment solutions.
- **In-house Facilities :** RO membrane rolling, injection molding, excellent design & tool room, and a modern assembling unit.
- **State-of-the-Art :** Laboratory equipment and quality control teams ensure the highest standards.
- **Research and Development :** Focus on continuous improvement in product offerings.
- **Innovation is our Core :** We Hold 8 patents to innovative products and over 20 design registrations.

Our in-house R & D team has developed, **patented and award-winning products**, including:

- **TODI :** The world’s first digitally customizable TDS water purifier.
- **IONPOT :** Transforms a traditional clay pot (Matka) into a source of antioxidant alkaline water.
- **BFT Technology :** A revolutionary advancement in water softening. - World’s first in water softeners.
- **Digital Dosing Tank :** World’s first, automates anti-scalant chemical dilution for efficiency and accuracy.
- **Openable Inline Filters :** A sustainable solution reducing plastic waste. Reusable cost-effective Canister : Easy to clean, refill, and maintain.
- **Scale Free :** Protects against hard water scaling.

Sales and Marketing

- **Transparent Sales Policy :** Ensures long-term partnerships with dealers, distributors, and agents.
- **Strong Relationships :** Many distributors have been with ORG since its inception.
- **Teamwork and Collaboration :** Every team member plays a vital role in the company’s success.
- **Win-Win Approach :** Focus on mutually beneficial relationships with all stakeholders.

Overall : ORG Engitech Limited is an innovative and quality-driven company with a focus on providing sustainable cost-effective water solutions. We have a strong track record of innovation, quality, and customer-centricity.

Partner with Us : ORG Engitech Ltd is dedicated to building strong, long-term relationships with distributors, dealers, and customers. Join us in our mission to provide Innovative Water Treatment Solutions for every home and industry.



VISION

जल ही जीवन जल ही देवता
जल प्राणों से प्यारा है ।
हरेक घरको मिले शुद्ध जल
ORG का नारा है ।
घर घर पहुंचे गंगा-यमुना
यही प्रयास हमारा है ।

We believe we can improve people's lives through business....

Being busy in one or the other way is doing business. At ORG we do business in the right way, at the right time and with the right people.

Time is free for all, but at ORG we value time. Thus we shall give our utmost to time, for the best returns to our suppliers, customers, employees and share holders. We will ensure that the growth of our company shall enrich all stakeholders who are attached with ORG.



PURPOSE



MISSION

“To Be a Role Model Organisation in our Industry” Where,

- Something innovative in Everything...
- Products that offer Value for Money...
- Learning is as a passion...
- Quality is an Attitude...
- Delighted customers are an Asset...
- Teamwork makes the dreams work.....

Our values are the DNA of our business, We Believe “ A Man, Machine, Intellectual Property and Knowledge can be Acquired, But a company must cultivate its own values”

- INTEGRITY
- HONOUR
- STEADY IMPROVEMENT
- LEADERSHIP
- DIVERSITY AND INCLUSIVENESS
- INTEGRATION



VALUE

Message from Director



Anil Gajera

Dear Friends,

I hope this message finds you well. As I reflect on our journey since the inception of ORG in 2010, I am filled with gratitude for the milestones we've achieved together and the innovative spirit that has driven us forward over the past 15 years.

When we started ORG, our vision was simple yet powerful: to create residential RO plants that outperformed existing brands. It has been an exciting journey, where each step has presented us with opportunities to explore new technologies and enhance our offerings.

I consider myself fortunate to have embarked on the automation of water softeners in 2008. At that time, the market was dominated by manual systems, and imported solutions were not feasible for the Indian consumer or the local water management landscape. Our successful launch of the automatic water softener in 2009 marked a significant shift towards user-friendly and cost-effective solutions tailored for the Indian market.

In 2017, we felt particularly proud to introduce TODI technology, enabling consumers to set TDS levels digitally according to their preferences. We firmly believe that TODI represents one of the best water purification technologies available today. As we ventured into new innovative products, including alkaline systems and automated DM, mixed bed, and UF systems, we continued to prioritize our commitment to quality and user satisfaction.

Throughout our journey, we have developed numerous innovative products that empower you and our channel partners to tackle water-related challenges effectively for your customers. What began as a venture for our own financial growth has now transformed into a shared vision—a collective dream that resonates with every individual associated with ORG.

I would like to extend a warm invitation to all our friends in the water treatment industry to participate in our technical training seminars. We believe in the power of learning through sharing, and I am a firm advocate of the idea that true service to our customers comes from knowledge and mentorship. As I often say, "Sales is not an art; it is serving by heart." When we support our customers genuinely, they will naturally gravitate towards our solutions.

Thank you for being an integral part of our journey. Together, let us continue to innovate and provide quality solutions for water management.

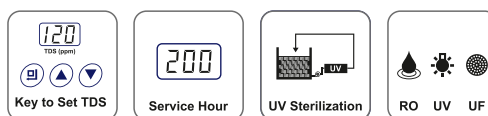
Warm regards,

Anil Gajera

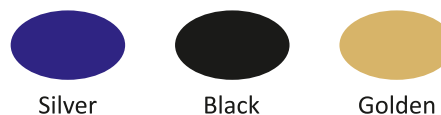
Director, ORG

todi[®]-100

- User can set TDS digitally with the help of only 3 keys.

**todi[®]-200****todi[®] - Plus 100**

- TDS of purified water can be set digitally by users.
- Display remaining service hours to help the customer know when the next service is due.
- Storage tank water sterilized by UV after every 4 hours.

**todi[®]-Alklinator**

- TDS of purified water can be set digitally by users with 3 keys.
- Display remaining service hours to help the customer know when the next service is due.
- Provides purified water as well as Live Anti-Oxidant Alkaline hydrogen rich water using the Dual digital dispensing technology.



RO + UV + TDS CONTROLLER

IS 16240 : 2023



CM/L:7200235909



"ORG offers high-quality Residential RO+UV+TDS Controller machines, available in various cabinet designs to meet different market needs. Built with premium filters and components made by ORG, these systems comply with BIS standards for residential RO purifiers, ensuring safety and reliability. We also provide OEM solutions and private labeling, giving businesses the flexibility to customize products under their own brand while maintaining ORG's quality standards."

PRESSURE SYSTEM FOR UTS / IONIZER



ORG's Pressure System for UTS and Ionizer is a compact under-the-counter pumping solution that upgrades storage-type RO systems. Its elegant cabinet-style design eliminates the need for traditional hydro-pneumatic tanks, which are difficult to clean and maintain.

The system draws water directly from the RO storage tank and delivers it to the faucet with consistent pressure. Featuring a booster pump, non-return valve (NRV), and high-pressure switch, it ensures fully automatic operation.

For added protection, it supports dry run prevention using a low-level sensor in the RO storage tank, safeguarding the pump from damage. It can also be installed between an Ionizer and RO system to automate the Ionizer's operation with consistent flow and pressure.

This solution allows even cabinet-type storage RO systems to function as UTS (Under-the-Sink) systems, offering enhanced flexibility and convenience.



NEW

ALKALINE PEN

- Provide Anti-oxidant Alkaline water
- Just Shake the Pen for ½ Minute in a glass of water
- Travelling Friendly



todi[®]-Alklinator

- TDS of purified water can be set digitally by users with 3 keys.
- Display remaining service hours to help the customer know when the next service is due.
- Provides purified water as well as Live Anti-Oxidant Alkaline hydrogen rich water using the Dual digital dispensing technology.



ionpot[®]

- Provide Anti-oxidant Alkaline water
- Can be directly install on claypot
- Wall mounted Installation can be done



NEW

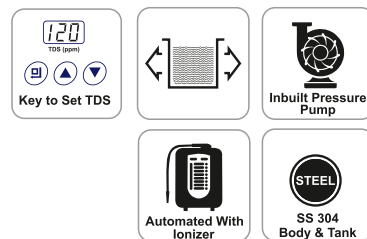
ALKLINIZER

- ORG Alklinizer – The perfect add-on for any RO system, delivering instant antioxidant alkaline water without water wastage, offering results as good as an ionizer at a fraction of the cost.





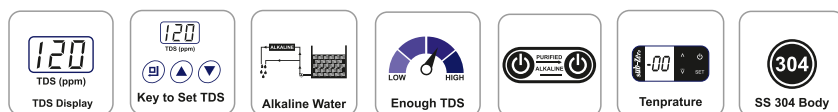
todi®- I SS



- Compact Design
- TDS of purified water can be set digitally by users with 3 keys.
- It has high storage and purification capacity as like 25 ltr/hr.
- It has inbuilt pressure pump to provide sufficient pressure to Ionizer.
- It can be automated with Ionizer Machine.
- It has a complete body of SS 304 with SS 316 Storage tank.



todi® - Cooler



- User can set TDS digitally with the help of only 3 keys.
- Upper & lower limit of TDS can be set.
- User can set Temperature digitally with the help of only 1 key.
- It constantly circulating the stored water every 4 hours through Circulating Pumping system.
- It is made up of SS 304 Body.
- It has Dual Digital Dispensing Technology which gives Live Anti-Oxidant Alkaline Anti-bacterial as well as Purified Water.



todi® - Institute

- User can set TDS digitally with the help of only 3 keys.
- Suitable for all types of supply water like Borewell, Tanker Water, or Municipal water.
- Upper & lower limit of TDS can be set.
- Unique designed with inbuilt storage tank

- Purification Capacity : 250 Lph
- Storage Capacity : 200 Ltr
- Dimensions in mm : L 920 x W 810 x H2000



25 LHP RO



ORG - RO WATER PURIFIER E-25

Purification Capacity	25 Ltr./Hour (125 Ltr./ Day Max.)
Input Voltage Range	160-300 Volt Ac, 50Hz
Operating Voltage & Current	24V DC @2.5A
Power Consumption	60 Watt
Booster Pump	300 GPD - 1 Nos
Membrane	90 GPD - 2 Nos
Inlet Water Pressure	0.3 (Min) - 2.2 (Max) Kg/Cm2
Products Dimension (MM)	L398 * W297 * H462

ORG - RO WATER PURIFIER E-50

Purification Capacity	50 Ltr./Hour (250 Ltr./ Day Max.)
Input Voltage Range	160-300 Volt Ac, 50Hz
Operating Voltage & Current	24V DC @2.5A
Power Consumption	60 Watt
Booster Pump	300 GPD - 2 Nos
Membrane	90 GPD - 4 Nos
Inlet Water Pressure	0.3 (Min) - 2.2 (Max) Kg/Cm2
Products Dimension (MM)	L462 * W305 * H787

50 LHP RO



100 LPH RO



ORG - RO WATER PURIFIER E-100

Purification Capacity	100 Ltr./Hour (500 Ltr./ Day Max.)
Input Voltage Range	230-240 Volt Ac, 50Hz
Operating Voltage & Current	230V AC @5.5A
Control Panel	DICOM 1*1
Booster Pump	LUBI LRH 100 (1.0 HP)
Membrane	ORG LE 4021 PRO
Antiscalant	Polyphosphate 900 Gm
Filter Housing	20" Mid Line - 2 Nos
Filter Housing	11" Mid Line - 1 nos
Products Dimension (MM)	L560 * W458 * H940

INDUSTRIAL RO STANDARD



250lph, 500lph and 1000 lhp

- Fully automatic operation with automatic multiport valves
- Best quality component used
- Easy to install and maintenance Friendly design

INDUSTRIAL RO - PRE TREATMENT (OPTIONAL)



PRE-TREATMENT (OPTIONAL)

RO PLANT

500lph and 1000 lhp

- Now you can choose Pre-Treatment as per your raw water quality.
- Easy to transport , Easy to install and Space efficient

AUTOMATIC DM PLANT



- Fully automatic operation with PLC, conductivity controller and automatic Multiport valve.
- Display daily production quantity and totalization of product water

AUTOMATIC UF



- Fully automatic operation with PLC
- Used 7 numbers of high quality motorised ceramic ball valves with 24V DC power.
- In-built MCF filters



Softener Mini

- Can be easily Install on wall and ready to use
- Inbuilt brine tank with salt perforated bottom plate.

■ Max. Flow Rate	: 600 LPH
■ OBR (Basis on 200 ppm)	: 1500 Ltr
■ Resin Tank Volume	: 8 Ltr
■ Resin Quantity	: 6 Ltr
■ Salt Tank Volume	: 8 Ltr



Softener 10A

- Elegant designed, cabinet type water softener
- Display - Current time, remaining soft water & current flow

■ Max. Flow Rate	: 1000 Lph
■ OBR (Basis on 200 ppm)	: 1500 Ltr
■ Resin Tank Volume	: 8 Ltr
■ Resin Quantity	: 6 Ltr
■ Salt Tank Volume	: 12 Ltr

Softener Mini Pro / Nano Pro



NEW

- Can be easily Install on wall and ready to use
- Upgraded Design: The new model features a sleek, modern design for enhanced aesthetics.
- Stronger Hanging Clamp: Improved clamp design ensures stable wall mounting with no tilting, providing a secure fit.

	MINI PRO	NANO PRO
■ Max. Flow Rate	: 600 LPH	500 LPH
■ OBR (Basis on 200 ppm)	: 1500 Ltr	625 Ltr
■ Resin Tank Volume	: 8 Ltr	8 Ltr
■ Resin Quantity	: 6 Ltr	2.5 ltr
■ Salt Tank Volume	: 8 Ltr	8 Ltr

Bathroom Softener



- Fully automatic microprocessor-controlling operation
- Alarm - time to add salt
- Leakage protection indicator

■ Max. Flow Rate	: 600 LPH
■ OBR (Basis on 200 ppm)	: 1200 Ltr
■ Resin Tank Volume	: 6 Ltr
■ Resin Quantity	: 4.8 Ltr
■ Salt Tank Volume	: 8 Ltr

Softener C1044BFT



- Display - Current time, remaining soft water & current flow
- BFT Technology helps to make fully automated operation with pump, water level controller and Softener
- Incorporated with pressure relief SV and sampling valve

■ Max. Flow Rate	: 3000 Lph
■ OBR (Basis on 200 ppm)	: 11500 Ltr
■ Resin Tank Volume	: 50 Ltr
■ Resin Quantity	: 46 Ltr
■ Salt Tank Volume	: 73 Ltr

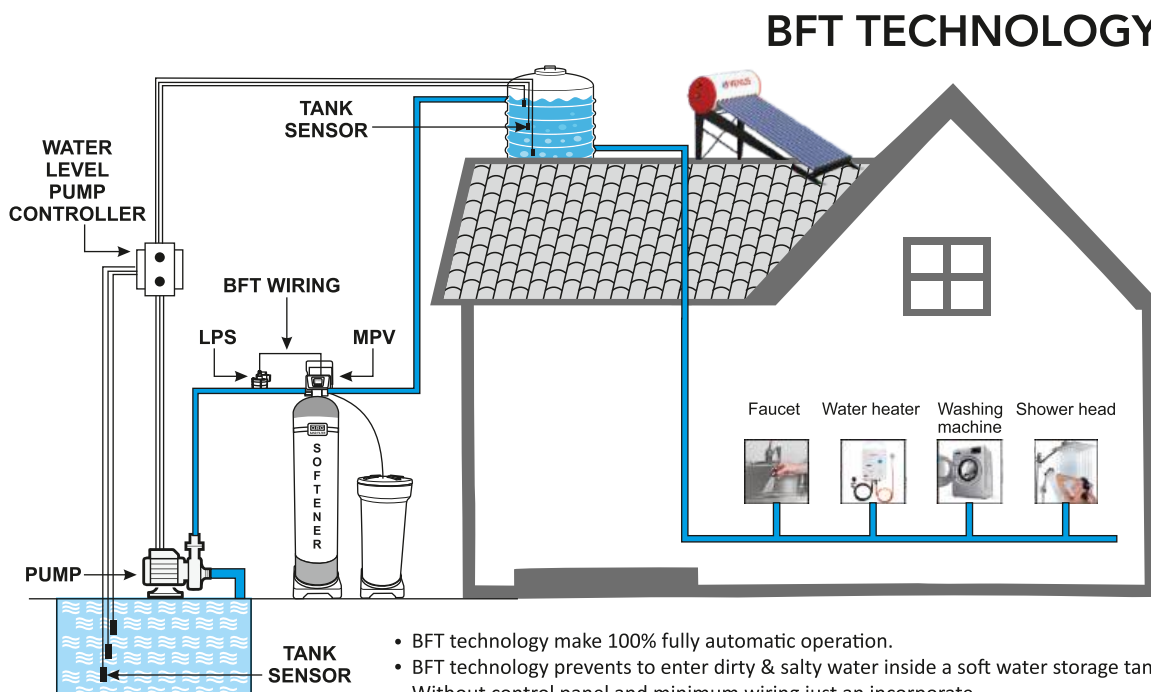
WATER SOFTENERS WITH BFT TECHNOLOGY

In a typical home installation, the water softener is positioned either before or after the storage tank. When the softener is installed after a storage tank, the water gets softened and consumers can use it directly without storage. However, if the softener is installed before the tank, the water gets softened as well as it gets stored and consumers can use the softened water from the storage tank.

The water softener service mode is based on OBR (volume in ltr). When the pre-set OBR volume gets finished, the water softener automatically changes its mode from service to regeneration. The regeneration starts counting down pre-set time of regeneration until it reaches zero. The softener then returns to the service mode.

The water softener and the pumping - storage tank sensors are completely separate devices with zero communication between them. Sometimes during regeneration mode, there might be a shortage of water in the supply tank due to insufficient levels of water in the ground water tank. In this situation the pump automatically shuts down while the water softener is continuously counting down its pre-set regeneration time until it reaches zero and then the softener mode will change to service mode. In the actual situation, regeneration does not happen, the resin does not get recharged and does not rinse properly so still there is salty and dirty water remains inside the resin tank. So now when the water supply gets started, salty and dirty water from the resin tank comes out to the softened water storage tank.

To address these issues, ORG modified the water softener's multiport valve by incorporating a low pressure switch input. This modified the multiport valve's two wires to connect with the (NC) and (C) terminals of the low pressure switch. When there is no water supply to the softeners during the regeneration process, the softener halts the count down timer until it receives water supply. We call this problem solving innovation 'The BFT Technology'. Due to this BFT technology, there is a 100% fully automatic operation, ensuring no entry of dirty and salty water into the soft water storage tank.





Softener HO-20

Softener HO-45

Softener HO-20, HO-45

- Easy to install and ready to use
- Display - Current time, remaining soft water & current flow

	HO-20	HO-45
■ Max. Flow Rate	: 1200 Lph	2000 Lph
■ OBR (Basis on 200 ppm)	: 3750 Ltr	7500 Ltr
■ Resin Tank Volume	: 18 Ltr	38 Ltr
■ Resin Quantity	: 15 Ltr	30 Ltr
■ Salt Required / Regeneration	: 2.3 Kg	4.5 Kg

Softener C-20/20-AD, C-45/45-AD

- Automatic OBR calculation & settings
- Incorporated with softness control valve
- Continuous supply raw water during regeneration

	C-20/20-AD	C-45/45-AD
■ Max. Flow Rate	: 1200 Lph	: 2000 Lph
■ OBR (Basis on 200 ppm)	: 3750 Ltr	: 7500 Ltr
■ Resin Tank Volume	: 18 Ltr	: 38 Ltr
■ Resin Quantity	: 15 Ltr	: 30 Ltr
■ Salt Tank Volume	: 22 Ltr	: 55 Ltr

C-20	20-AD	C-45	45-AD
-	✓	-	✓
-	✓	-	✓
-	✓	-	✓



C-20 / 20-AD

C-45 / 45-AD

Water Softener BFT



- R series MPV with Big Display
- E Series MPV with Small display

- Display - Current time, remaining soft water & current flow
- BFT Technology helps to make fully automated operation with pump, water level controller and Softener
- Incorporated with pressure relief SV and sampling valve

MODEL :

100R BFT , 100E BFT

150R BFT, 150E BFT

200R BFT, 200E BFT



Softener With Sand Filter

MODEL :

100R BFT , 100E BFT

150R BFT, 150E BFT

200R BFT, 200E BFT

- Incorporated Sand filter prevents turbidity to improve efficiency of softener's resin as well as quality of water
- Brine Tank with Brine valve, Brine well and perforated Disk
- Can be use before and after soft water storage tank

Cabinet Type Softener with Sand Filter-C1044

- Incorporated Sand filter prevents turbidity to improve efficiency of softener's resin as well as quality of water
- Fully automatic microprocessor-controlling operation
- Inbuilt brine tank, brine valve and float assembly

	FILTER + SOFTENER
■ Max. Flow Rate	: 3000 Lph
■ OBR (Basis on 200 ppm)	: 11500 Ltr
■ Sand - Resin Tank Volume	: 50 Ltr
■ Sand Quantity	: 30 Ltr
■ Resin Quantity	: 46 Ltr
■ Salt Tank Volume	: 73 Ltr



Softener with Sand Filter S Series

MODEL :

100S BFT, 150S BFT, 200S BFT

- Incorporated Sand filter prevents turbidity to improve efficiency of softener's resin as well as quality of water
- BFT Technology helps to make fully automated operation with pump, water level controller and softener
- One MPV with Big LED Display can operate sand and softener



Community Softener

MODEL :

300R, 500R, 700R,
1000R, 2000R

- BFT Technology helps to make fully automated operation with pump, water level controller and Softener
- Incorporated with pressure relief SV and sampling valve
- Can be use at Hotel, Hospital, Hostel and entire colony

Twin Tank Softener

- One Working one stand by Resin tank to make sure 24x365 days continuous soft water supply
- Specially Designed Three way ceramic core ball valve fixed at outlet of both tanks
- BFT Technology helps to make fully automated operation with pump, water level controller and Softener

- Max. Flow Rate : 9000 Lph
- OBR (Basis on 200 ppm) : 450000 Ltr
- Resin Tank Volume : 1000 + 1000 Ltr
- Resin Quantity : 1800 Ltr
- Salt Tank Volume : 2000 Ltr



Softener with Ball Valve

- Used Ceramic core motorised Ball valves and Controller
- Customised Flow rate can be possible with selection of Different size of ball valves from DN25 to DN80
- Can be use before and after soft water storage tank

FLOW	MAIN BALL VALVES (5 NOS)	BRAIN BALL VALVE (2 NOS)	PIPING SIZE
80 M ³ /h.	DN-65	DN-32	DN-80
150 M ³ /h.	DN-80	DN-40	DN-100

RO ScaleFree



- **Specially Designed for Residential RO Systems**

It helps protect the RO membrane, booster pump, and flow restrictor (FR) against scaling.

- Max Flow : 60Lph
- Polyphosphate : 21gm

Com-RO ScaleFree



- Specially Design for Commercial RO System
- Can be Install before Booster pump of RO

- Max Flow : 200Lph
- Polyphosphate : 130gm



ScaleFree Appliances



- Specially designed for appliances like washing machines, dishwashers, geysers and toilet flush tanks.
- 1/2" & 3/4" union-type outlet connector for easy installation.

- Polyphosphate : 310gm

ScaleFree Tank

JUST PUT IN YOUR WATER TANK



- **Floating Design** : Automatically floats and moves within the water storage tank, ensuring even distribution of polyphosphate.

- Polyphosphate : 310gm

Shower ScaleFree



- Easily fit with Shower
- Prevent showerhead scaling and maintain optimal water flow

- Polyphosphate : 250gm



BW ScaleFree

BW ScaleFree – Whole House Protection



- Protects plumbing, geysers, washing machines, dishwashers, and more.
- Easy to install on the main water inlet to protect the entire household's piping.

- Max Flow : 3000 Lph
- Polyphosphate : 3000gm





Welded Inline
Sediment Filter



Welded Inline
Carbon Filter



Openable Inline Sediment
Filter Bottom Connection



Openable Inline Carbon
Filter Bottom Connection



Openable Inline
H2AAA Bottom Connection



Openable Inline
H2AAA + Copper
Bottom Connection



Openable Inline
H2AAA + Zinc Copper
Bottom Connection



Openable Inline
H2AAA Alkaline Mini



Openable Inline
H2AAA + Copper Mini



Openable Inline
H2AAA + Zinc + Copper Mini

INLINE FILTERS



NEW

Openable Inline
Sediment Filter
Top & Bottom Connection



NEW

Openable Inline
Carbon Filter
Top & Bottom Connection



NEW

Openable Inline
H2AAA
Top & Bottom Connection



NEW

Openable Inline
H2AAA + ZINC + COPPER
Top & Bottom Connection



NEW

Openable Inline
H2AAA + Copper
Top & Bottom Connection



UF MINI Openable



Membrane Housing



12" Welded
Membrane Housing



8" Welded
Membrane Housing



FR - 200, 450, 700, 800



3 WAY FR



ADJUSTABLE FR



FLOAT WITH SWITCH



NEW

FLOAT WITH SWITCH VERTICAL



NEW

INDUSTRIAL FLOAT



TDS



PRE FILTER HOUSING
(TRANSPARENT)



PRE FILTER HOUSING
(OPAQUE)



LP DOMESTIC



NEW
HP DOMESTIC



NEW
PRESSURE REDUCING VALVE
(PRV)



TANK INLET



RO MAMBRANE

UV MODULE

Presenting a revolutionary approach with a totally new design

Zero water contact with plastic & Aluminium and water pass through Quartz tube only



Outside plastic
inside aluminium



11W UV lamp
easy to change



Quartz tube
easy to open and clean



Brine Tank with Brine Valve, Brine Well & Perforate Disk

Brine tank Available Range
100, 200, 500, 1000 & 2000



STAND



6 WAY CONNECTOR



LPS FOR SOFTENR



RASIN



NEW

IN OUT CONNECTOR



NEW

VACUUM BRACKER



PRESSURE RELIEF SV



FLAP COVER



SAMPLING VALVE



NEW

UPVC NRV



NEW

4 X 2.5 ADAPTER



STRAINER 20MM,25MM



STRAINER FOR SOFTENER
(40MM, 50MM)



STRAINER FOR FILTER
(40MM, 50MM)



FUNNEL



NEW
DISTRIBUTION
SAMPLING BIG



NEW
DISTRIBUTION
SAMPLING SMALL



NEW
DISTRIBUTION ASSEMBLY
TOP MOUNT



63602



MPV FOR SOFTENER
63604



65603



65605



12504



63608



63610B



63615



63618

NEW ARRIVAL PRODUCTS



10" Slim Line Filter Housing



20" Slim Line Filter Housing



10" Mid Line Filter Housing



20" Mid Line Filter Housing



20" Big Line Filter Housing



10" Slim Line Media Canister



20" Slim Line Media Canister



10" Mid Line Media Canister



20" Mid Line Media Canister



20" Big Line Media Canister



20" Bag filter

RO Mambranes



AVAILABLE MODEL

SHARA MEMBRANE BW-4021
SHARA MEMBRANE BW-4040
SHARA MEMBRANE BW-8040
SHARA MEMBRANE BN-4040
SHARA MEMBRANE BN-8040
ORG MEMBRANE LE-4021 PRO



NEW

Industrial Float



NEW

Industrial HPS



NEW

Softener LP



NEW

Industrial LP



UPVC Reducer



NEW

Clamp for Filter Housing

Digital Dosing Tank (DDT)

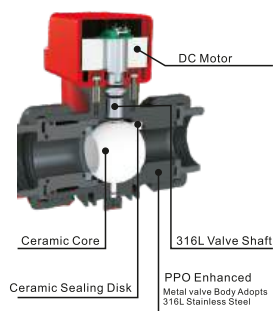


We researched and developed a unique product which is called DDT (Digital Dosing Tank). It plays a big role in dosing chemical industries. Our Automatic Digital Dosing Tank is a very simple device where users can digitally set the water-chemical mixing ratio in a very easy way.

Benefits of the ORG - DDT

- Prevents dosing pump & dry run from damage (It automatically trips off in the event of no chemical)
- Ensures precise dilution ratio (The system incorporates a highly accurate chemical feeding pump).
- It prevents expensive chemical wastage (Caused due to improper regular handling)
- It save expensive manpower. (It is fully automatic once the chemical tank is empty, alarms are activated & pause the RO system).
- It eliminates human error in mixing (It is automatically done by the system)

Ceramic Ball Valve

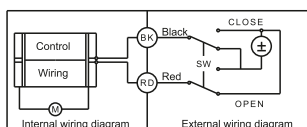


Advanced Ceramic Ball Valves – Precision, Durability, and Reliability ORG's Manual and Electronic Ceramic Ball Valves are engineered for superior performance and longevity, thanks to their high-precision ceramic core components. The valve core and valve seat are crafted from premium corundum ceramic or silicon carbide, renowned for their exceptional strength and resilience. These materials are sintered at ultra-high temperatures—1680°C for corundum ceramic and 2200°C for silicon carbide—achieving a remarkable Rockwell hardness of HRA≥85.



The valves undergo multi-process precision machining, ensuring an almost perfect fit between the ball core and valve seat. This precise alignment allows for smooth opening and closing with low torque requirements, while delivering superior corrosion resistance, wear resistance, and unmatched durability.

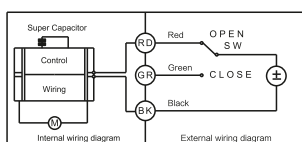
Whether manual or electronically actuated, these valves offer long-lasting performance even in the most demanding applications, making them ideal for industrial, chemical, and water treatment systems where reliability and durability are paramount.



Two-Wire Motorized Controlling Ball Valve

The Two-Wire Motorized Controlling Ball Valve offers a simple and efficient solution for automated flow control. It operates using two control wires, allowing easy open and close functions by reversing the motor polarity.

Working Principle : The valve features two control wires. To Open or Close the Valve: Switch the polarity of the connected wires—reversing the polarity will change the valve's position between open and closed. This design simplifies wiring while providing reliable control, making it ideal for various automated applications.



Three-Wire Motorized Controlling Ball Valve

The Three-Wire Motorized Controlling Ball Valve is designed for efficient and reliable flow control in various applications. It operates using three control wires, enabling precise open and close functions.

Working Principle :

The valve features three control wires : Open, Close, and Common (Public). To Open the Valve: Connect the Open wire to the Common wire—the ball valve will rotate to the open position. To Close the Valve: Connect the Close wire to the Common wire—the ball valve will rotate to the closed position. This simple yet effective control mechanism allows for seamless integration into automated systems, ensuring reliable performance and easy operation.



Duration Time Control Ball Valve

The Duration Time Control Ball Valve is designed for precise timed control of fluid flow, enabling the valve to open and close automatically based on pre-set time intervals. It is compatible with DC12V or DC24V electric ball valves, making it versatile for various applications.

Working Principle : Opening Duration: The valve opens when the programmed opening duration time is reached. Closing Duration: The valve closes after the set closing duration time elapses. The system offers two modes for time settings to ensure flexible control.

Time Control Modes:

Minute Mode: Adjustable from 000:01 to 999:59 (hours:minutes)

Minute Mode : Adjustable from 000:15 to 999:59 (minutes:seconds)



Point-in-Time Control Ball Valve

The Point-in-Time Control Ball Valve offers advanced scheduling capabilities, allowing users to set specific open and close times for each day of the week. This ensures precise, automated flow control tailored to daily operational needs.

Working Principle: The valve can be programmed to open and close at specific times from Monday to Sunday. Individual Time Settings: Users can set distinct open and close times for each day. Continuous State Feature: If the switch number is set to "0" for any day, the valve will maintain its last state from the previous day without any change.

Multi-Port Valves



MANUAL FILTER VALVES

Model No	Inlet/ Outlet Size	Capacity	Installation Position	Special Features	Strainer & Riser Pipe	Base Size
51202	3/4" (20NB)	2000 Lph	Top/Side Mount	-	3/4" _ 1.05"	2.5"-8NPSM
51202C	3/4" (20NB)	2000 Lph	Top Mount, Front Face	-	3/4" _ 1.05"	2.5"-8NPSM
51204N	1" (25NB)	4000 Lph	Top/Side Mount	With Engineering Plastic Disc	3/4" _ 1.05"	2.5"-8NPSM
51204C	1" (25NB)	4000 Lph	Top Mount, Front Face	-	3/4" _ 1.05"	2.5"-8NPSM
51204K	1" (25NB)	4000 Lph	Top/Side Mount	With Bypass Function	3/4" _ 1.05"	2.5"-8NPSM
51106	1" (25NB)	6000 Lph	Top/Side Mount	-	1" _ 1" D-GB	2.5"-8NPSM
51208	1.5" (40NB)	8000 Lph	Top/Side Mount	-	1.5 _ 1.25" D-GB	4"- 8UN
51210	2"(50NB)	10000 Lph	Top/Side Mount	-	2" _ 1.5"D-GB	4"- 8UN
51210N	2"(50NB)	10000 Lph	Top/Side Mount	With Engineering Plastic Disc	2" _ 1.5"D-GB	4"- 8UN

MANUAL SOFTENER VALVES

Model No	Inlet/ Outlet Size	Capacity	Installation Position	Special Features	Strainer & Riser Pipe	Base Size
61202	3/4" (20NB)	2000 Lph	Top/Side Mount	--	3/4" _ 1.05"	2.5"-8NPSM
61202C	3/4" (20NB)	2000 Lph	Top Mount, Front Face	-	3/4" _ 1.05"	2.5"-8NPSM
61104	1" (25NB)	4000 Lph	Top/Side Mount	-	3/4" _ 1.05"	2.5"-8NPSM
61204C	1" (25NB)	4000 Lph	Top Mount, Front Face	-	3/4" _ 1.05"	2.5"-8NPSM
61206	1.5" (40NB)	6000 Lph	Top/Side Mount	-	3/4" _ 1.05"	2.5"-8NPSM
61210	2"(50NB)	10000 Lph	Top/Side Mount	-	2" _ 1.5"D-GB	4"- 8UN
61210N	2"(50NB)	10000 Lph	Top/Side Mount	With Engineering Plastic Disc	2" _ 1.5"D-GB	4"- 8UN

AUTOMATIC FILTER VALVES - FOR RO PLANT

F SERIES AUTOMATIC FILTER VALVE FOR RO SYSTEM- WITH PUMP ON SIGNAL (SIGNAL INPUT)

Model No	Inlet/ Outlet Size	Capacity	Installation Position	Special Features	Strainer & Riser Pipe	Base Size
F202Q2	3/4" (20NB)	2000 Lph	Top Mount, Front Face	Simple wirining with RO	3/4" _ 1.05"	2.5"-8NPSM
F204Q2	1" (25NB)	4000 Lph	Top Mount, Front Face	Simple wirining with RO	3/4" _ 1.05"	2.5"-8NPSM
F210Q2	2" (50NB)	10000 Lph	Top Mount, Front Face	Simple wirining with RO	2" _ 1.5"D-GB	4"-8NPSM
S202Q2 (softener)	3/4" (20NB)	2000 Lph	Top Mount, Front Face	Simple wirining with RO	3/4" _ 1.05"	2.5"-8NPSM
S204Q2(Softener)	1" (25NB)	4000 Lph	Top Mount, Front Face	Simple wirining with RO	3/4" _ 1.05"	2.5"-8NPSM

R SERIES AUTOMATIC FILTER VALVE FOR RO SYSTEM - TIME BY HOUR/DAY OR TRIGGER BY PLC

Model No	Inlet/ Outlet Size	Capacity	Installation Position	Special Features	Strainer & Riser Pipe	Base Size
53502	3/4" (20NB)	2000 Lph	Top Mount, Front Face	Big Screen Display	3/4" _ 1.05"	2.5"-8NPSM
53504	1" (25NB)	4000 Lph	Top Mount, Front Face	Big Screen Display	3/4" _ 1.05"	2.5"-8NPSM
53504C	1" (25NB)	4000 Lph	Side Mount	Big Screen Display	-	2.5"-8NPSM
53508	1.5" (40NB)	8000 Lph	Top Mount, Front Face	Big Screen Display	1.5 _ 1.25" D-GB	4"-8NPSM
53510	2" (50NB)	10000 Lph	Top Mount, Front Face	Big Screen Display	2" _ 1.5"D-GB	4"-8NPSM
53510B	2" (50NB)	10000 Lph	Side Mount	Big Screen Display	-	4"-8NPSM
53515	2" (50NB)	15000 Lph	Side Mount	Big Screen Display	-	4"-8NPSM
53518	2" (50NB)	18000 Lph	Side Mount	Big Screen Display	-	4"-8NPSM
53520	2" (50NB)	20000 Lph	Side Mount	Big Screen Display	-	4"-8NPSM
53540	DN 65	40000 Lph	Side Mount	Big Screen Display	-	-
53550	DN 80	50000 Lph	Side Mount	Big Screen Display	-	-

AUTOMATIC FILTER VALVES - FOR IRON REMOVAL & MEDIA FILTER

R SERIES AUTOMATIC FILTER VALVE FOR IRON REMOVAL & MEDIA FILTER- METER TYPE (VOLUME TYPE)

Model No	Inlet/ Outlet Size	Capacity	Installation Position	Special Features	Strainer & Riser Pipe	Base Size
53602	3/4" (20NB)	2000 Lph	Top Mount, Front Face	Big Screen Display	3/4" _ 1.05"	2.5"-8NPSM
53604	1" (25NB)	4000 Lph	Top Mount, Front Face	Big Screen Display	3/4" _ 1.05"	2.5"-8NPSM
53604C	1" (25NB)	4000 Lph	Side Mount	Big Screen Display	N/A	2.5"-8NPSM
53608	1.5" (40NB)	8000 Lph	Top Mount, Front Face	Big Screen Display	1.5 _ 1.25" D-GB	4"-8NPSM
53610	2"(50NB)	10000 Lph	Top Mount, Front Face	Big Screen Display	2" _ 1.5"D-GB	4"-8NPSM
53610B	2"(50NB)	10000 Lph	Side Mount	Big Screen Display	-	4"-8NPSM
53615	2"(50NB)	15000 Lph	Side Mount	Big Screen Display	-	4"-8NPSM
53618	2"(50NB)	18000 Lph	Side Mount	Big Screen Display	-	4"-8NPSM
53620	2"(50NB)	20000 Lph	Side Mount	Big Screen Display	-	4"-8NPSM
53640	DN 65	40000 Lph	Side Mount	Big Screen Display	-	-
53650	DN 80	50000 Lph	Side Mount	Big Screen Display	-	-

Q-SERIES AUTOMATIC FILTER VALVE FOR IRON REMOVAL & MEDIA FILTER - METER TYPE (VOLUME TYPE)

Model No	Inlet/ Outlet Size	Capacity	Installation Position	Special Features	Strainer & Riser Pipe	Base Size
55602	3/4" (20NB)	2000 Lph	Top Mount, Front Face	Can use for sand with softener	3/4" _ 1.05"	2.5"-8NPSM
55604	1" (25NB)	4000 Lph	Top Mount, Front Face	Can use for sand with softener	3/4" _ 1.05"	2.5"-8NPSM
55610	2"(50NB)	10000 Lph	Top Mount, Front Face	Can use for sand with softener	2" _ 1.5"D-GB	4"-8NPSM

AUTOMATIC SOFTENER VALVES - BFT

Q-SERIES AUTOMATIC SOFTENER VALVE WITH BFT TECHNOLOGY TO PROTECT FROM DIRTY AND SALTY WATER

Model No	Inlet/ Outlet Size	Capacity	Installation Position	Special Features	Strainer & Riser Pipe	Base Size
65603-ORG	3/4" (20NB)	2000 Lph	Top Mount, Front Face	LP connection Wire -BFT	3/4" _ 1.05"	2.5"-8NPSM
65605-ORG	1" (25NB)	4000 Lph	Top Mount, Front Face	LP connection Wire -BFT	3/4" _ 1.05"	2.5"-8NPSM
65610-ORG	2"(50NB)	10000 Lph	Top Mount, Front Face	LP connection Wire -BFT	2" _ 1.5"D-GB	4"-8NPSM

R SERIES AUTOMATIC SOFTENER VALVE WITH BFT TECHNOLOGY TO PROTECT FROM DIRTY AND SALTY WATER

Model No	Inlet/ Outlet Size	Capacity	Installation Position	Special Features	Strainer & Riser Pipe	Base Size
63602-ORG	3/4" (20NB)	2000 Lph	Top Mount, Front Face	LP connection Wire -BFT	3/4" _ 1.05"	2.5"-8NPSM
63604-ORG	1" (25NB)	4000 Lph	Top Mount, Front Face	LP connection Wire -BFT	3/4" _ 1.05"	2.5"-8NPSM
63604C-ORG	1" (25NB)	4000 Lph	Side Mount	LP connection Wire -BFT	-	2.5"-8NPSM
63608-ORG	1.5" (40NB)	8000 Lph	Top Mount, Front Face	LP connection Wire -BFT	1.5 _ 1.25" D-GB	4"-8NPSM
63610-ORG	2"(50NB)	10000 Lph	Top Mount, Front Face	LP connection Wire -BFT	2" _ 1.5"D-GB	4"-8NPSM
63610B-ORG	2"(50NB)	10000 Lph	Side Mount	LP connection Wire -BFT	-	4"-8NPSM

R SERIES AUTOMATIC SOFTENER VALVE

Model No	Inlet/ Outlet Size	Capacity	Installation Position	Special Features	Strainer & Riser Pipe	Base Size
63615	2"(50NB)	15000 Lph	Side Mount	Only can use after Tank	-	4"-8NPSM
63618	2"(50NB)	18000 Lph	Side Mount	Only can use after Tank	-	4"-8NPSM
63620	2"(50NB)	20000 Lph	Side Mount	Only can use after Tank	-	4"-8NPSM
63640	DN 65	40000 Lph	Side Mount	Only can use after Tank	-	-
63650	Dn80	50000 Lph	Side Mount	Only can use after Tank	-	-

Auto Booster / Traditional Pump

UNIQUE FEATURES

	Auto Booster	Traditional
• No Need To Pressure Setting	✓	
• Elegant Design	✓	✓
• SS 304 5 way connector with inbuilt NRV		✓
• Easy To Install and ready to use	✓	✓
• Silent Running	✓	✓
• Low Maintenance	✓	✓
• Adjustable pressure setting For pump start/stop		✓
• Standard Glycerine Based Pressure Gauge		✓
• Pressure Tank Capacity 8L TO 100L		✓

MODEL SPECIFICATION

Pump	Inlet Outlet	Hp	Flow	Head	Pressure Tank			
					24L	35L	60L	100L
2.30	25 x 25	0.50	2000	21	✓	✓		
2.40	25 x 25	0.75	2000	28	✓	✓	✓	
2.60	25 x 25	1.00	2000	42	✓	✓	✓	
4.40	35 x 25	1.00	4000	30	✓	✓	✓	✓
4.50	35 x 25	1.33	4000	38	✓	✓	✓	✓
4.60	35 x 25	1.50	4000	45	✓	✓	✓	✓
8.30	40 x 32	2.50	8000	36		✓	✓	✓
8.40	40 x 32	3.00	8000	48		✓	✓	✓
12.40	40 x 40	3.00	12000	39			✓	✓



Auto Booster Pump



Traditional Pump

Intelligent Pressure Pump



UNIQUE FEATURES

- User friendly Digital pressure setting
- Energy save almost 20 to 40%
- Dry run protection
- Start/Stop delay times to prevent from frequent On/Off
- Protection against phase reversal and single phasing
- Indication of Down Time error signal in screen
- Holiday mode function
- Water leakage protection
- Start/Stop with Acceleration speed
- Equivalent pressure in each output

MODEL SPECIFICATION

Pump	In/Out	Hp	Flow	Head	Pressure Tank				
					8L	24L	35L	60L	100L
2.40	25 x 25	0.75	2000	28	✓	✓	✓		
2.60	25 x 25	1.00	2000	42	✓	✓	✓		
4.40	35 x 25	1.00	4000	30	✓	✓	✓	✓	
4.50	35 x 25	1.33	4000	38	✓	✓	✓	✓	
4.60	35 x 25	1.50	4000	45	✓	✓	✓	✓	
8.30	40 x 32	2.50	8000	36		✓	✓	✓	✓
8.40	40 x 32	3.00	8000	48			✓	✓	✓
12.40	40 x 40	3.00	12000	39			✓	✓	✓



AUTOMATIC WATER LEVEL CONTROLLER WITH CERAMIC BALL VALVE

The ORG Water Level Controller with Ceramic Ball Valve is a problem solving product designed for water storage tanks with installed pressure pumps at Bungalows and Apartments. This product consists of three parts:

- 1) Motorised Ceramic Ball Valve
- 2) Water Level Controller for Motorised Ball Valve
- 3) Floaty Switch

The Motorised Ceramic Ball Valve can be installed on the water input pipe of the storage tank. Operating on 24V DC power, it is rain protected with an IP65 design. Its core parts, including the ceramic ball and seal are made by ceramic and due to its ceramic moving mechanical parts it ensure a long maintenance free life.

The Water Level Controller takes signal input from the floaty switch and turning the ball valve ON and OFF. It can be installed on the wall of the water storage tank or easily mounted on a vertical pipe using a belt. Operating on 230V AC power, it supplies 24VDC power to the ball valve. The Water Level Controllers made of IP65 ABS plastic to protect it from rain.

The floaty is simply fixed in the storage water tank, with wire connections (NO, C, NC) to the water level controller.

Available Size : 1", 1.5", 2"



जल ही जीवन जल ही देवता
जल प्राणों से प्यारा है ।
हरेक घरको मिले शुद्ध जल
ORG का नारा है ।
घर घर पहुंचे गंगा-यमुना
यही प्रयास हमारा है ।



ORG ENGITECH LIMITED

Survey No. 1009/P, Ahmedabad to Indore Highway, Village – Kubadthal, Ta:- Daskroi, Ahmedabad – 382430.

☎ 9712904010 ✉ sales@orgwater.com 🌐 www.orgwater.com