

Aquaguard

— WATER SOFTENER —

**EUREKA
FORBES**

Facing hair loss issues? The real cause may be Hard Water!

Convert hard water into soft water with
Aquaguard Water Softeners.



WHAT IS HARD WATER?

The water that nature gives us as rain is soft water. But when this soft water comes in contact with soil, minerals such as calcium and magnesium are added to the soft water, thus making the water hard.



Classification of Water	Hardness Concentration
Soft Water	< 60 mg/l
Moderately Hard	60 – 120 mg/l
Hard	120 – 180 mg/l
Very Hard	> 180 mg/l

7 OUT OF 10 HOUSEHOLDS RECEIVE HARD WATER!





Hair Loss



**Spots on
Fittings &
Utensils**

HARMFUL EFFECTS OF HARD WATER



**Rough
Skin**



**Stains on
Tiles**



**Colour
Fading**

PRESENTING Aquaguard

— WATER SOFTENER —

Converts Hard Water into Soft Water,
Automatically

**AWS 600**

For Bathrooms/
Appliances

AWS I-600

For Bathrooms/
Appliances

AWS C-1200

For Small Homes

AWS C-2500 DX

For Independent
Homes

AWS C-3500 DX

For Multi-storey
Buildings

AWS 7500

For Large Villas

AWS 5000

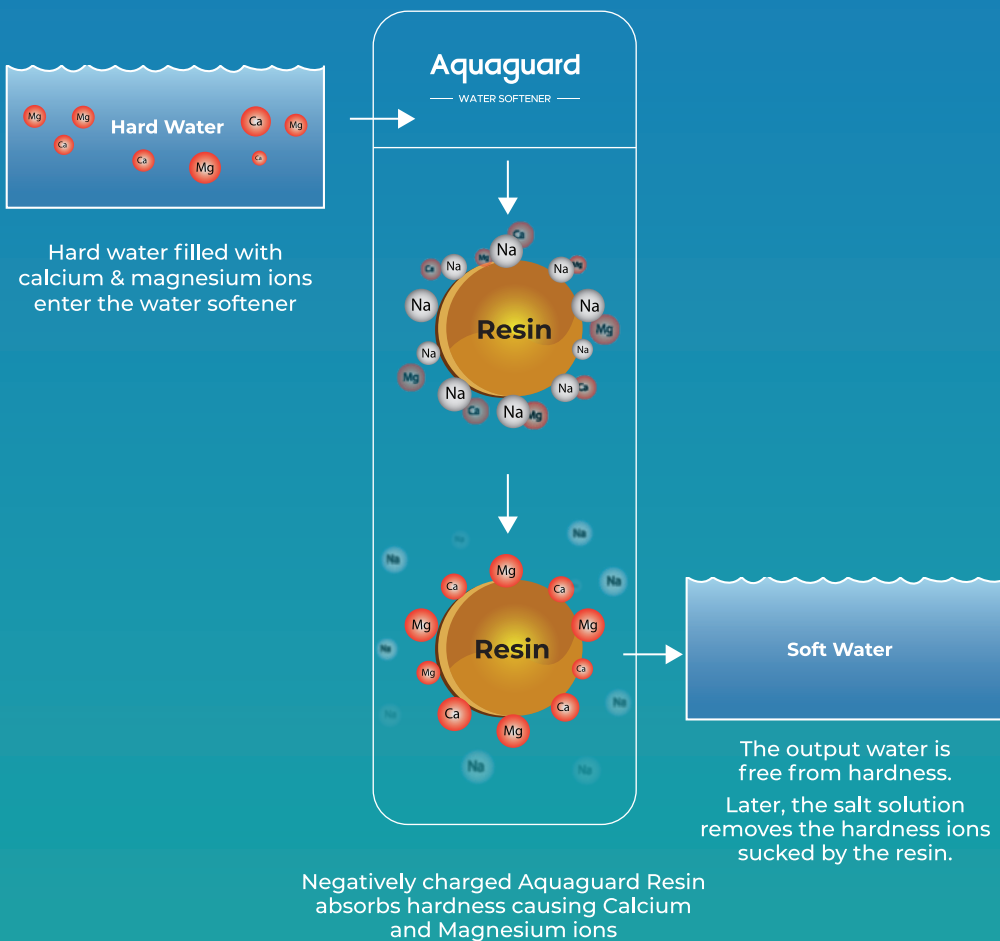
For Multi-storey
Buildings

AWS I-2500

For Independent
Homes

HOW DOES A WATER SOFTENER WORK?

IONIC TRANSFER TECHNOLOGY



Healthier Hair



Brighter Clothes



Softer Skin



ADVANTAGES OF SOFT WATER*

Shinier Bathroom Fittings



Longer Appliance Life



*As compared to effects of hard water through appliances & plumbing.

AQUAGUARD WATER SOFTENER ADVANTAGES

FULLY AUTOMATIC REGENERATION

Once set, the water softening media will regenerate itself automatically ensuring hassle-free operations.

Just set it
& forget it



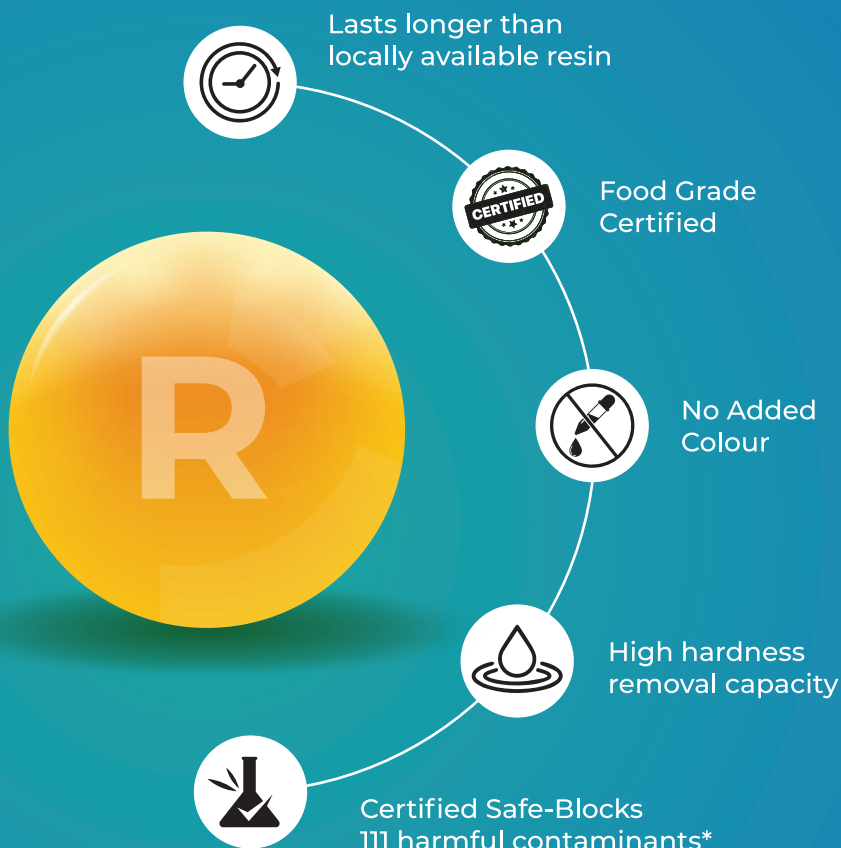
LOW RUNNING COST

With high quality media and efficient programming, Aquaguard Water Softeners provide the lowest running cost



BEST IN CLASS SOFTENING MEDIA

Our high-grade resin removes hardness completely. Its fine granules absorb more, providing maximum soft water before recharge.



*Lab certified for leaching as per globally material safety standards (NSF/ ANSI/ CAN 61)

INTELLI-MIX TECHNOLOGY*

Adjust water softness with Intellimix technology and save 20% on monthly costs



*Available in selected models.

*Varies depending on input hardness and daily consumption.

FLEXIBLE REGENERATION OPTIONS*

Time Based - Choose to regenerate your water softener at a set time when your water usage is low, like the time you go to bed.

Continuous soft water supply



OR

Flow based - Use less salt and water by regenerating only when necessary



Save money on salt usage



*Available in selected models.

ADDITIONAL ADVANTAGES



Large LCD Information Panel

Monitor displays remaining resin capacity and flow rate



Low Electricity Consumption

Our softeners consume electric energy equivalent to charging a mobile phone.



Negligible Pressure Drop

Fine-grain softening media maintains high-pressure flow



Aesthetic Design

Sleek design without occupying much space.



High Quality Certified Components

NSF-certified components ensure reliability and minimize downtime for heavy-duty water operations.

MAINTENANCE OF WATER SOFTENER MADE EASY

- Check the brine tank for salt level
- Ensure the brine tank is always filled to one-third of its level
- Always use Genuine Aquaguard Softening Media
- Enjoy interrupted supply of soft water

Benefits of Using Genuine Aquaguard Salt



Certified
Dust Free
>99.9% Purity



Extends
Machine
Life



Less
Impurity
Buildup



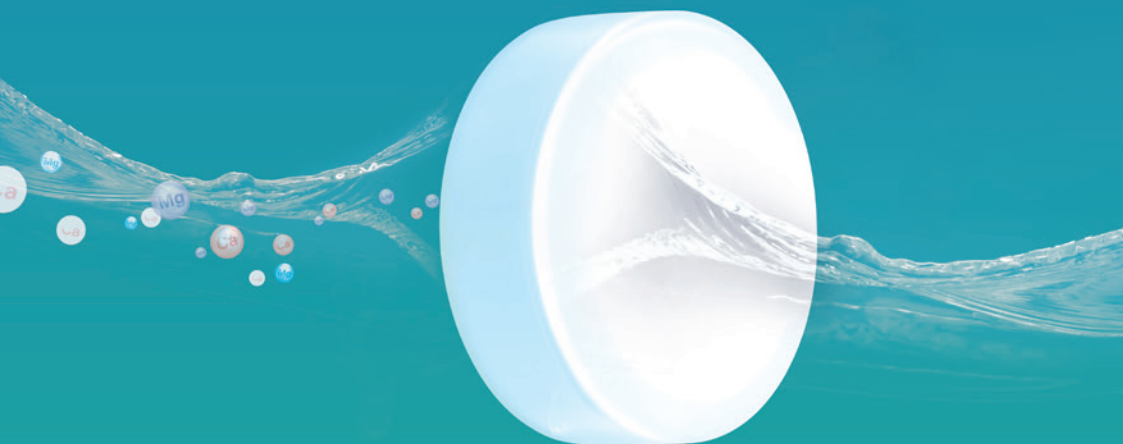
Uninterrupted
Regeneration



Lasts Longer,
Dissolves
Slowly



Higher
Water
Flow



Our authentic regeneration media can be directly bought from EFL website or app.

SOFT WATER SAVES YOU MONEY

Save more with soft water—your salt refilling cost pays for itself!



Reduced Skincare Products



Reduced Electricity Cost



Reduced Scaling
Maintenance



Reduced Appliance
Running Cost

RANGE OF WATER SOFTENERS TO SUIT YOUR EVERY NEED!



AWS I-600

Bathrooms/Appliances

- Wall Mounted Design
- Compact Body
- High Salt Storage
- No Electricity Required



AWS 600

Bathrooms/Appliances

- Countertop Design
- Easy to Use
- Compact Body
- No Electricity Required

PREMIUM WATER SOFTENERS RANGE

AWS C-3500 DX

For Multi-storey Building

AWS C2500 DX

For Independent Home

AWS C-1200

For Small Homes



Aesthetic Sleek
Design



IntelliMix
Technology



LCD
Information
Panel



Holiday
Mode

HEAVY DUTY WATER SOFTENERS RANGE

AWS 7500

For Large Villas

AWS 5000

For Multi-storey Building

AWS I-2500

For Independent Homes



Flexible
Regeneration
Modes



Rapid
Regeneration



High
Flow Rate
Compatible



Best in Class
Softening
Media

BEWARE OF POOR QUALITY PRODUCTS CLAIMING TO BE AQUAGUARD WATER SOFTENERS



Technical Specification	Aquaguard Softeners	Other Players	Local Softeners	Salt-free Softeners
Anti-Scaling	✓	✓	✓	✓
Healthier Hair & Skin	✓	✓	✓	✗
Hardness Removal	✓	✓	✓	✗
Automatic Operation	✓	✓	✗	—
High Efficiency Certified Media	✓	?	✗	
High Salt Savings	✓	✗	✗	
Aesthetic Design	✓	✗	✗	
Hardness Control	✓	✗	✗	
Higher Soft Water Output (OBR)	✓	✗	✗	
Holiday Mode	✓	✗	✗	
Rapid Regeneration	✓	?	✗	

THE BEST COMPANIONS FOR AQUAGUARD WATER SOFTENERS



Regeneration Pump

- Saves electricity cost of running high raw water pumps during regeneration
- The low-power pump can be connected either before or after tank installation



Jumbo Pre-filter

- High-grade sediment filter
- Extends softener life
- Protects softener from damaging coarse particles



Whole House Filters

- Sediment Filter: For excess dirt and sand in water
- Activated Carbon Filter: For foul smell or excess chlorine
- Iron Remover: For excess iron in water

HOW TO CHOOSE THE RIGHT MODEL?

The choice of an Aquaguard Water Softener (AWS) model depends on the number of people in the house, water usage, input water hardness and input water flow rate.

Step 1: Choose the model

Product Guide		Number of Residents in a Home				
		1-2	3-4	5-6	7-8	9-10
Hardness Level (ppm)	100-200	12L	12L	12L	12L	12L
	200-300			25L	25L	25L
	300-400		25L		35L	35L
	400-500			35L		
	500-600		35L		75L	
	600-700			50L		
	700-800		75L			
	800-900					
	900-1000					

Step 2: Check against the input flow rate

If input flow rate is higher than the model flow rate, please upgrade to a higher capacity model.

Model	AWS 600	AWS I-600	AWS C1200	AWS C-2500 DX	AWS I-2500	AWS C-3500 DX	AWS 5000	AWS 7500
Max. Flowrate (LPH)	500	600	1000	1900	2100	2250	3000	4000

Final product recommendation may vary depending on the site condition and customer requirements.
For above 800 ppm hardness, additional softener required.

PRODUCT TECHNICAL SPECS



AWS I-600



AWS 600

Resin Volume (L)	6	5.8
Dimension (HxDxW) cm	100 X 20 X 23	44 x 20 x 36
Regeneration Type	Manual	Manual
Max. Input Flow Rate (LPH)	600	500
Max. Input Hardness (ppm)	750	750
Technology	Ionic-Transfer	Ionic-Transfer
IntelliMix Tech	NA	NA
Regeneration Mode	Manual	Manual
Salt Consumption Per Regeneration (kg)	0.6	0.6
Output Between Regeneration (@500 ppm Hardness) (L)	540	522
Max. Turbidity (NTU)	1	1
Max. Iron (ppm)	0.3	1
Total Unit Weight (kg)	9.2	8
Salt Tank Storage Capacity (L)	8	8
Input Working Pressure (kg/cm2)	1-3	1.5-3
Input Working Temperature (°C)	5-50	10-50
Input Power Supply	Non-Electric	Non-Electric
Rated Power (W)	NA	NA
Geolex™ media (kg)	NA	NA
Approx. Water used per regeneration (L)	50	40
Vessel Dimensions (HXD)	20" Bowl	13"X7"
Regeneration Time (min)	25	20
Inlet Outlet Size (inch)	1/2"	1/2"
Recommended Salt Storage (kg)	3	3



AWS C-1200



AWS I-2500

Resin Volume (L)	12	25
Dimension (HxDxW) cm	55 x 43.5 x 33.2	112 X 20 X 20
Regeneration Type	Automatic	Automatic
Max. Input Flow Rate (LPH)	1000	2100
Max. Input Hardness (ppm)	1000	1900
Technology	Ionic-Transfer	Ionic-Transfer
IntelliMix Tech	Yes	No
Regeneration Mode	Time-based	Time-based or Flow based
Salt Consumption Per Regeneration (kg)	1.2	2.5
Output Between Regeneration (@500 ppm Hardness) (L)	1080	2500
Max. Turbidity (NTU)	1	1
Max. Iron (ppm)	1	1
Total Unit Weight (kg)	11.5	35
Salt Tank Storage Capacity (L)	50	50
Input Working Pressure (kg/cm2)	1.5-3	1.5-3
Input Working Temperature (°C)	5-50	5-50
Input Power Supply	220-240VAC/50Hz	100-240V AC 50Hz
Rated Power (W)	≤15	18
Geolox™ media (kg)	NA	5
Approx. Water used per regeneration (L)	50	150
Vessel Dimensions (HXD)	15"X10"	44"X8"
Regeneration Time (min)	65	15
Inlet Outlet Size (inch)	3/4"	1"
Recommended Salt Storage (kg)	10	15



**AWS
C2500 DX**



**AWS
C3500 DX**

Resin Volume (L)	25	35
Dimension (HxDxW) cm	106 X 43.5 X 33.5	129 X 43.5 X 33.5
Regeneration Type	Automatic	Automatic
Max. Input Flow Rate (LPH)	1900	2250
Max. Input Hardness (ppm)	1850	2050
Technology	Ionic-Transfer	Ionic-Transfer
IntelliMix Tech	Yes	Yes
Regeneration Mode	Time-based	Time-based
Salt Consumption Per Regeneration (kg)	2.5	3.4
Output Between Regeneration (@500 ppm Hardness) (L)	2250	3150
Max. Turbidity (NTU)	1	1
Max. Iron (ppm)	1	1
Total Unit Weight (kg)	39	50
Salt Tank Storage Capacity (L)	56	60
Input Working Pressure (kg/cm2)	1.5-3	1.5-3
Input Working Temperature (°C)	5-50	5-50
Input Power Supply	100-200VAC/50Hz	100-200VAC/50Hz
Rated Power (W)	18	18
Geolex™ media (kg)	NA	NA
Approx. Water used per regeneration (L)	135	175
Vessel Dimensions (HXD)	35"X10"	44"X10"
Regeneration Time (min)	85	125
Inlet Outlet Size (inch)	1"	1"
Recommended Salt Storage (kg)	15	20



AWS 5000



AWS 7500

Resin Volume (L)	50	75
Dimension (HxDxW) cm	122 X 30.5 X 30.5	137 X 33 X 33
Regeneration Type	Automatic	Automatic
Max. Input Flow Rate (LPH)	3000	4000
Max. Input Hardness (ppm)	2100	2200
Technology	Ionic-Transfer	Ionic-Transfer
IntelliMix Tech	No	No
Regeneration Mode	Time-based or Flow based	Time-based or Flow based
Salt Consumption Per Regeneration (kg)	4.9	7.4
Output Between Regeneration (@500 ppm Hardness) (L)	5000	7500
Max. Turbidity (NTU)	1	1
Max. Iron (ppm)	1	1
Total Unit Weight (kg)	75	102
Salt Tank Storage Capacity (L)	80	120
Input Working Pressure (kg/cm ²)	1-3	1-3
Input Working Temperature (°C)	5-50	5-50
Input Power Supply	100-240V AC 50Hz	100-240V AC 50Hz
Rated Power (W)	18	18
Geolox™ media (kg)	15	21
Approx. Water used per regeneration (L)	200	250
Vessel Dimensions (HXD)	48"X12"	54"X13"
Regeneration Time (min)	25	35
Inlet Outlet Size (inch)	1"	1"
Recommended Salt Storage (kg)	25	35

WHY EUREKA FORBES?



Expert Home Visit

Our water expert visits the installation site and collects water sample for testing. The site is thoroughly inspected for the feasibility of installation.

Water Testing

Water sample is checked for hardness and flow rate. If required a comprehensive water quality test can be arranged.



Recommended Solution

Depending on water conditions, our experts recommend ideal products for you based on internal app

Professional Installation

The products are installed on-site by an expert team of technicians. Customer bears site readiness, plumbing-related charges, and add-on materials like additional piping, valves etc.



BRING HOME THE EUREKA FORBES ADVANTAGE!



The images used are for representative purposes.



Trust of over
15 million mothers**



Tested & Certified by over
130+ leading laboratories



Service within
5 kms.



Owned by over
1.62 lakh plus doctors



Over 21 technologies to
address 21 various water
conditions

**As per Superbrands and Reader's Digest.

 **EUREKA
FORBES**



Call
EuroHelpline
1860-266-1177

Now buy online on www.eurekaforbes.com

B1/B2, 701, 7th Floor, Marathon Innova Marathon NextGen, Off Ganpatrao Kadam Marg,
Lower Parel, Mumbai - 400 013, India.

Tel.: +9122 48821700, 62601888 | Fax: +91 22 48821701